

Certificate of Test

This is to certify that the element of construction described below was tested by CSIRO Division of Building, Construction and Engineering in accordance with Australian Standard 1530.4-1990 Methods for fire tests on building materials, components and structures, Part 4: Fire resistance tests of elements of building construction, on behalf of

Monolite Construction Panels Pty Ltd
129 Northern Road
WEST HEIDLEBERG VIC

A full description of the test specimen and the complete test results are detailed in the Division's report FSV 0078

Product Name: Monolite double panel sprayed concrete sandwich panel.

Description: The specimen comprised a single-leaf loadbearing wall comprising a central concrete core 75 mm thick sheeted both sides with steel-mesh lined polystyrene panels and then finished with 25 mm of sprayed concrete render. The total thickness of the wall was 255 mm and the applied load was 150 kN/m.

Construction is detailed in

- .specification numbered MonoD1 (2 pages), undated, by Monolite Construction Panels Pty Ltd.
- .drawing numbered Mono 1, dated 16 May 1990 by Monolite Construction Panels Pty Ltd.

The element of construction satisfied the following criteria during the fire test for the period stated

Structural Adequacy no failure at 241 minutes

Integrity no failure at 241 minutes

Insulation 172 minutes

and therefore for the purposes of Building Regulations in Australia achieved a FRL of 240/240/120

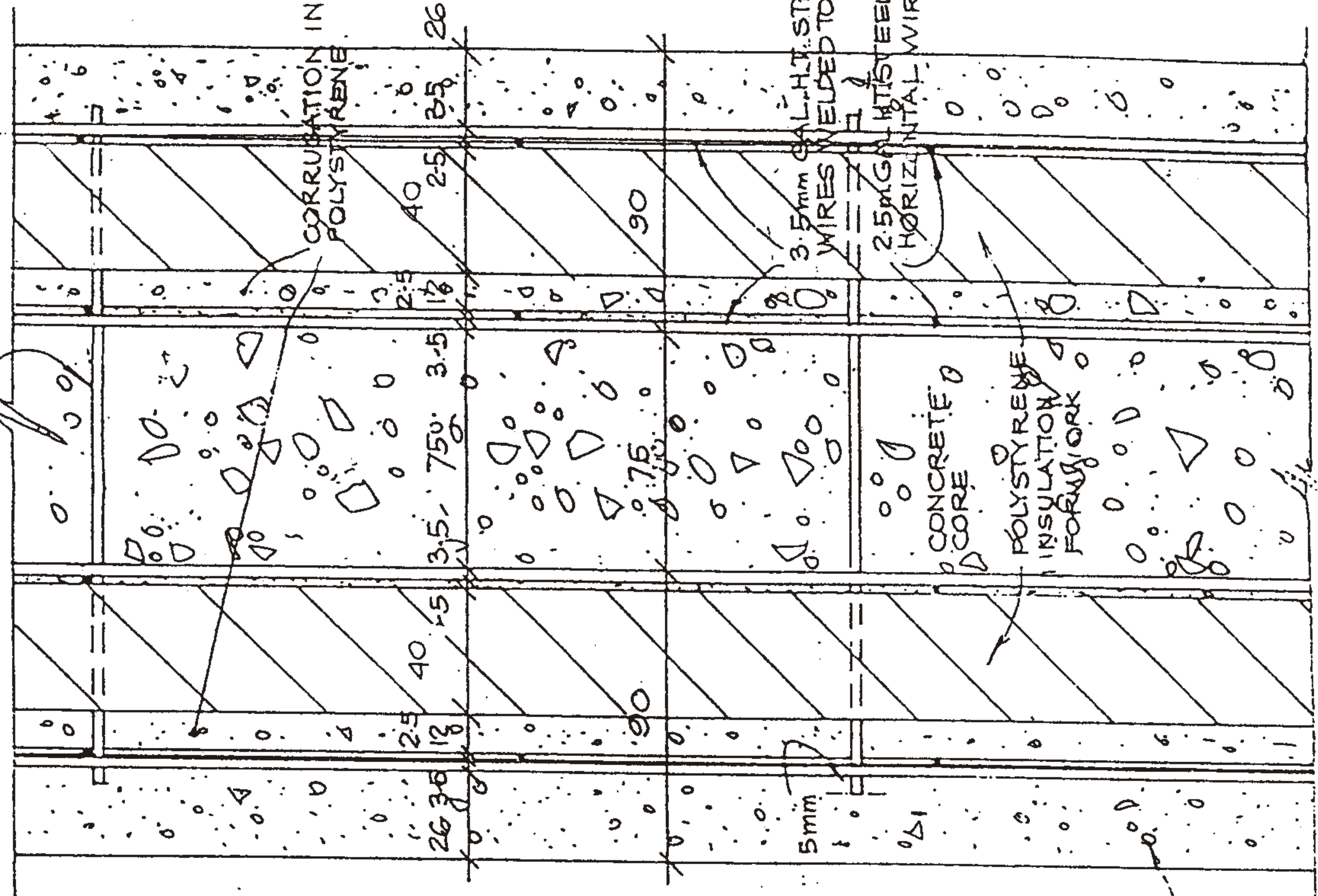
Testing Officer L B Retson Date of Test 17 May 1990

Issued on the 7 th day of September 1990
without alterations or additions

R. J. Dayeh
R J Dayeh
Principal Experimental Scientist
for Manager, Fire Technology.

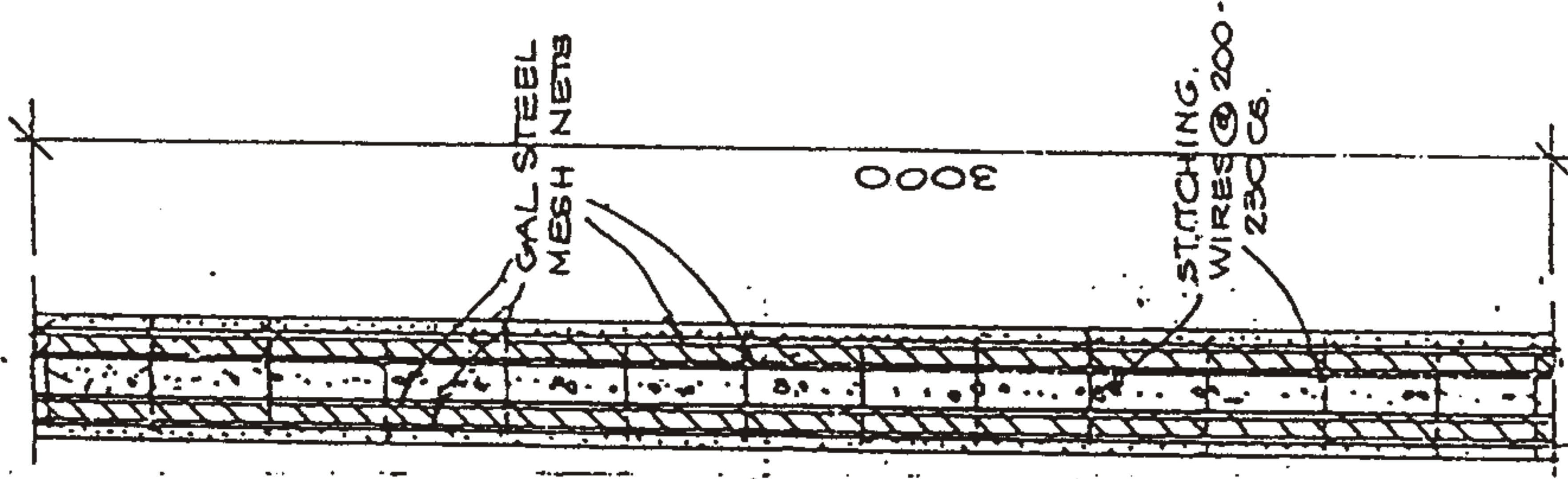


3 mm GAL. STITCHING WIRE @ 200 - 230 CS. WELDED TO FACE MESH.

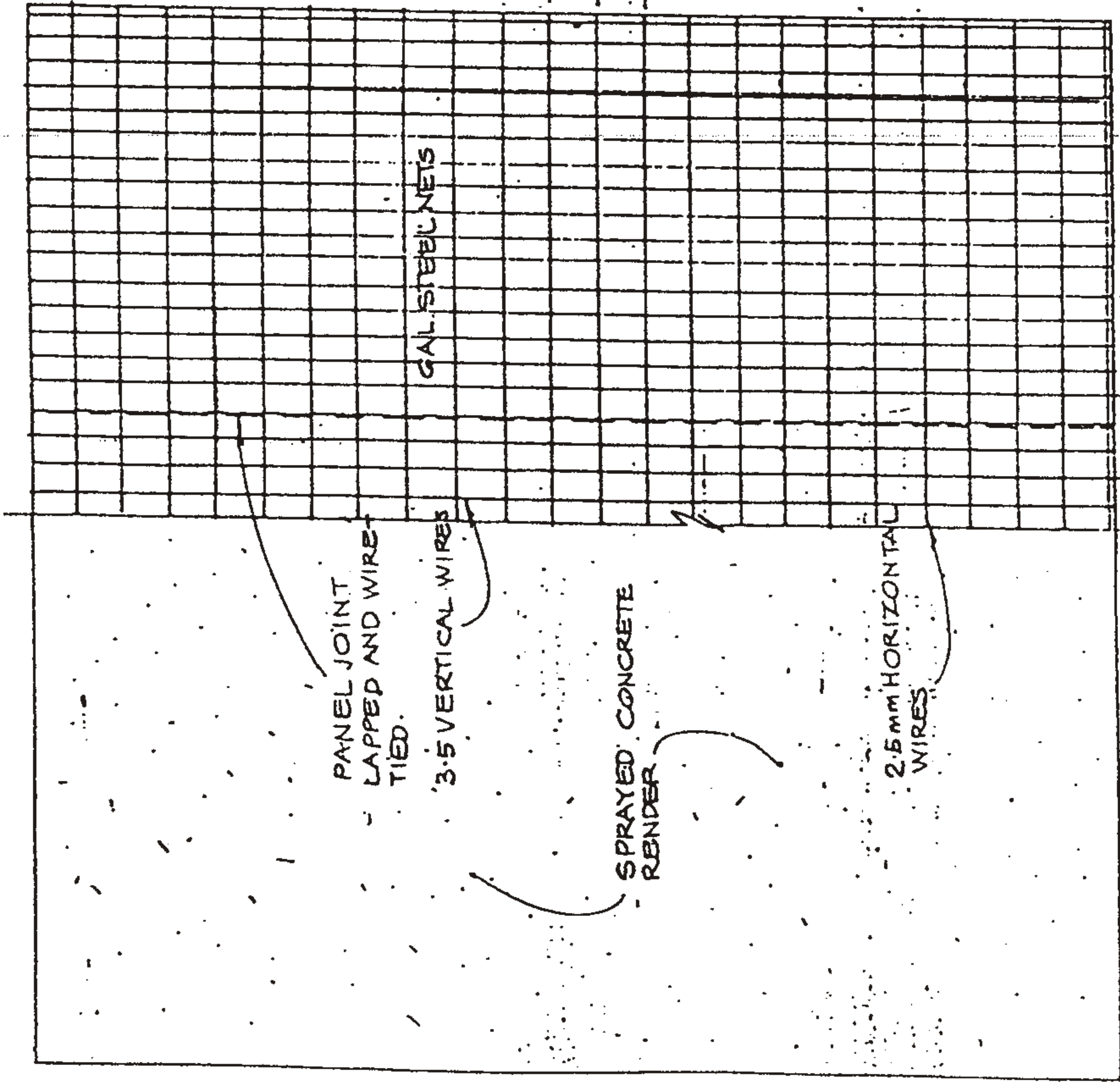


255

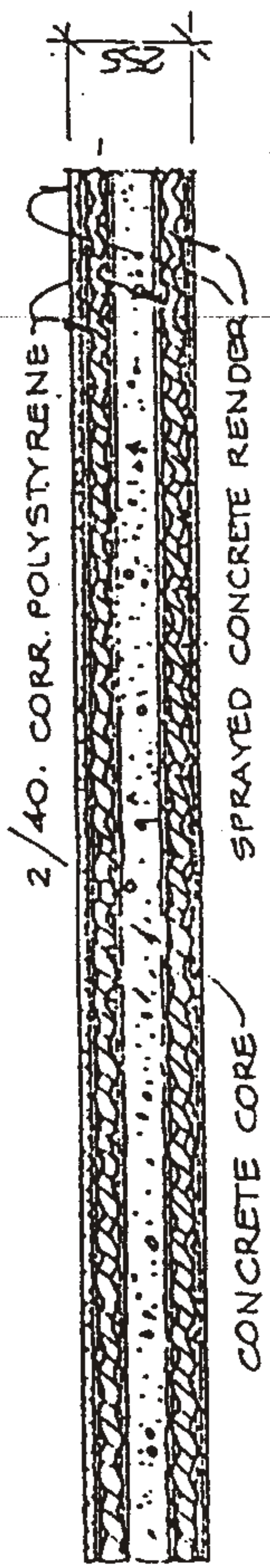
VERTICAL SECTION THROUGH PANEL
SCALE: 1/2 FULL SIZE



SECTION



ELEVATION OF PANEL



4 HOUR FIRE, LOAD-BEARING TEST FOR DOUBLE PANEL

PLAN OF PANEL SCALE 1:200
MONOLITE CONSTRUCTION PANELS PTY LTD
DRAWING No. MONO 1. DATE 16.5.90 DRAWN H.S.H.